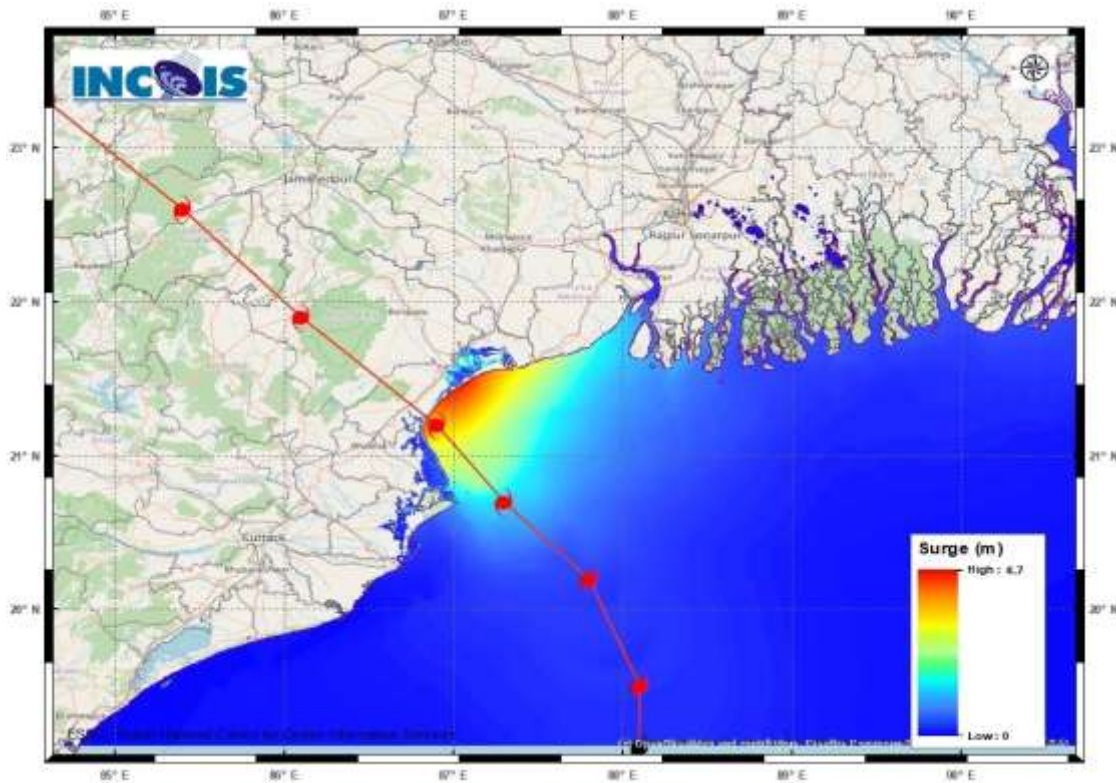


STORM SURGE GUIDANCE BASED ON 0600 UTC OF 26th MAY

TIDAL WAVES OF HEIGHT 1-2 METERS ABOVE ASTRONOMICAL TIDE ARE LIKELY TO INUNDATE LOW LYING AREAS OF BALASORE, BHADRAK, MEDINIPUR, SOUTH 24 PARGANAS DISTRICTS DURING NEXT 03 HOURS AND DECREASE GRADUALLY THEREAFTER.



Strom Surge Bulletin from INCOIS

MANDAL/TALUK	DISTRICT	STATE / UNION TERRITORY	NEAREST PLACE OF HABITATION	STORM SURGE (M) *	EXPECTED INUNDATION EXTENT (KM)
BALESHWAR	BALESHWAR	ODISHA	KUMBHIRGARI	2.2-4.7	UPTO 3.53
BHADRAK	BHADRAK	ODISHA	MOHANPUR	1.5-3.9	UPTO 9.00
JAGATSINGHPUR	JAGATSINGHPUR	ODISHA	MUSADIA	0.3-0.5	UPTO 0.28
KENDRAPARHA	KENDRAPARA	ODISHA	TIKAYAT NAGAR	0.2-1.7	UPTO 5.47
KANTHI	PURBA MEDINIPUR	WEST BENGAL	SAFAR CHATA	0.5-2.9	UPTO 1.50
DIAMOND HARBOUR	SOUTH 24 PARGANAS	WEST BENGAL	CHAKLOKNATH	0.2-1.2	UPTO 0.78
BASIRHAT	NORTH 24 PARGANAS	WEST BENGAL	AMLAMETHI	0.3-1.0	UPTO 0.37
TAMLUK	PURBA MEDINIPUR	WEST BENGAL	JAMITTA	0.3-1.3	UPTO 0.42
ULUBERIYA	HAORA	WEST BENGAL	DENANCHAR ORPHULICHAR	0.3-0.5	UPTO 0.42